



## Appach Road, Brixton, SW2

2 bedroom flat - conversion to let

**£450 Per Week**

Part furnished

### Property Details

A bright and airy two double bedroom apartment securely nestled on a popular residential street tucked away quietly off Brixton Hill. The flat benefits from two bay windows, one in the separate reception room which is a great space with room for a dining table and the other bay in the master bedroom. The kitchen has plenty of storage space with all you need in terms of mod cons and the window looks out onto the west-facing private garden at the rear. The two double bedrooms are both similar in size, located at different ends of the building. Appach Road is popular for its close proximity to both Brixton and Herne Hill town centres as well as excellent transport links with Brixton tube station just a short walk away and with a bus stop at the end of the road.

### Features

- Two double bedrooms
- Double fronted Victorian conversion
- Characterful features
- Cellar
- Private garden
- Close to Brockwell Park
- Quiet residential street
- Chain-free

Council tax band D      EPC rating D (59)





Appach Road, Brixton, SW2



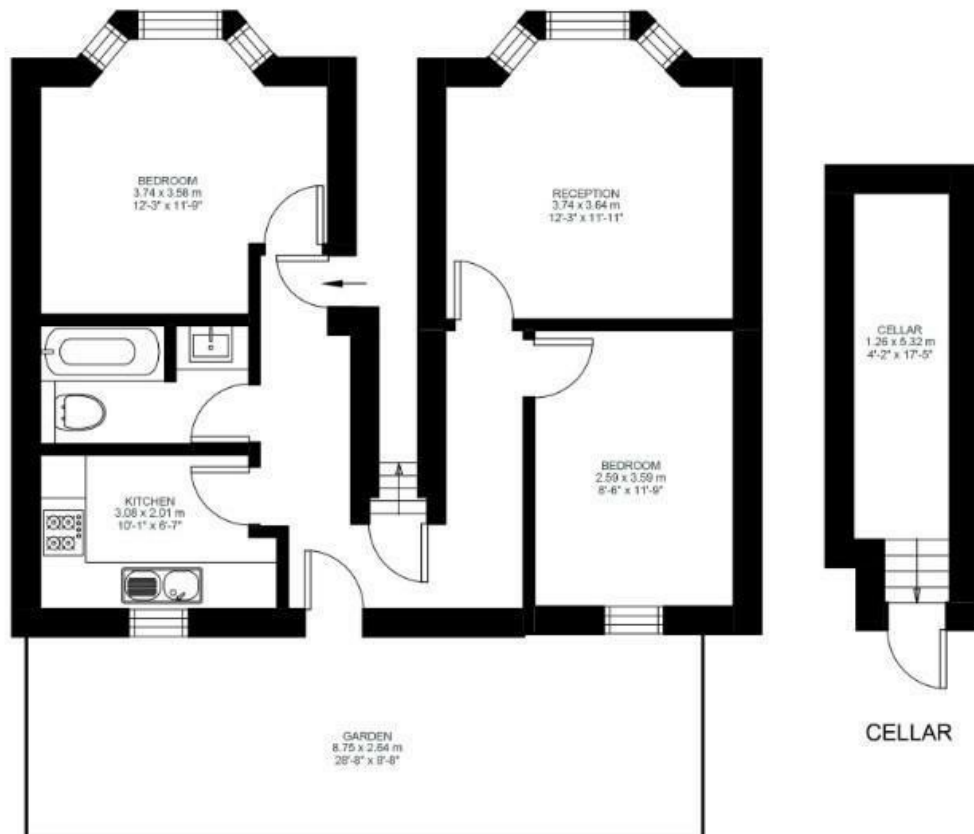
## 2 Bed flat

Approx internal area:

**676 sqft 63 sqm**

While we do try our very best, floor plans are produced as a guide only and we take no responsibility for the precise accuracy with which any property is represented

Appach Road





Appach Road, Brixton, SW2

